



KOLEKTOR NASIONAL RI



Handwritten text in Burmese script on a palm leaf, featuring three circular holes for binding. The text is arranged in approximately three horizontal lines across the length of the leaf.

Handwritten text in Burmese script on a palm leaf, featuring two circular holes for binding. The text is arranged in approximately three horizontal lines across the length of the leaf.

Handwritten Burmese script on a palm leaf, featuring two circular holes for binding. The text is arranged in approximately four horizontal lines across the length of the leaf.

Handwritten Burmese script on a second palm leaf, also featuring two circular holes. The text is arranged in approximately four horizontal lines, similar to the first leaf.

Handwritten text on a palm leaf manuscript strip, featuring two circular holes for binding. The script is in an ancient Southeast Asian style, likely Khmer or Thai, and is arranged in approximately 12 horizontal lines.

Handwritten text on a second palm leaf manuscript strip, also featuring two circular holes for binding. The script is consistent with the first strip, arranged in approximately 12 horizontal lines.

Handwritten text on a palm leaf manuscript strip, likely in Burmese script. The text is arranged in several lines across the length of the leaf. There are two circular holes visible on the strip, one near the left end and one near the right end, which were used for binding multiple leaves together.

Handwritten text on a second palm leaf manuscript strip, continuing the script from the first strip. It also features two circular holes for binding. The text is written in a consistent style, characteristic of traditional Burmese palm leaf manuscripts.

Handwritten text on a palm-leaf manuscript strip, likely in Burmese script. The text is arranged in approximately three lines across the length of the leaf. Two circular holes are visible, used for binding multiple leaves together.

Handwritten text on a second palm-leaf manuscript strip, continuing the script. The text is arranged in approximately three lines. Two circular holes are visible, consistent with the first strip.

Handwritten text on a palm leaf manuscript strip, featuring three circular holes for binding. The script is in an ancient Southeast Asian language, likely Khmer or Thai, and is arranged in approximately four horizontal lines.

Handwritten text on a second palm leaf manuscript strip, also featuring three circular holes for binding. The script is in the same ancient Southeast Asian language as the first strip, arranged in approximately four horizontal lines.

Handwritten text in Khmer script on a palm leaf, consisting of approximately 12 lines of text.

Handwritten text in Khmer script on a palm leaf, consisting of approximately 12 lines of text.

ပုဂ္ဂိုလ်တို့သည် နေရာတိုင်း၌ အစဉ်အဆက် ဝတ်ဆင်မှုများကို ပြုစုကြသည်။
အထူးသဖြင့် နေရာတိုင်း၌ အစဉ်အဆက် ဝတ်ဆင်မှုများကို ပြုစုကြသည်။
အထူးသဖြင့် နေရာတိုင်း၌ အစဉ်အဆက် ဝတ်ဆင်မှုများကို ပြုစုကြသည်။

အထူးသဖြင့် နေရာတိုင်း၌ အစဉ်အဆက် ဝတ်ဆင်မှုများကို ပြုစုကြသည်။
အထူးသဖြင့် နေရာတိုင်း၌ အစဉ်အဆက် ဝတ်ဆင်မှုများကို ပြုစုကြသည်။
အထူးသဖြင့် နေရာတိုင်း၌ အစဉ်အဆက် ဝတ်ဆင်မှုများကို ပြုစုကြသည်။

Handwritten text in Khmer script on a palm leaf manuscript strip. The text is arranged in approximately three lines. The script is finely etched into the surface of the dried leaf. There are three circular holes along the length of the strip, which were traditionally used for threading a cord to bind multiple leaves together into a book format.





Handwritten text in Burmese script on a wooden strip. The text is arranged in two lines and appears to be a list or a set of instructions. The script is finely etched or inscribed into the wood. There are two circular holes on this strip, one near the left end and one near the right end.

Handwritten text on a palm leaf, likely a historical record or legal document. The script is an ancient Southeast Asian script, possibly Khmer or Thai. The text is arranged in a single line across the length of the leaf.

Handwritten text on a second palm leaf, continuing the script from the first leaf. It contains several lines of text, with some characters appearing to be in a different script or dialect than the first leaf.

Handwritten text on a palm leaf manuscript strip, likely in Burmese script. The text is arranged in approximately three lines across the length of the leaf. Two circular holes are visible, used for binding multiple leaves together.

Handwritten text on a second palm leaf manuscript strip, continuing the script. The text is arranged in approximately three lines. Two circular holes are visible, consistent with the first strip.

Handwritten text on a palm leaf strip, likely a historical document or record. The script is in an ancient Southeast Asian script, possibly Khmer or Thai. The text is arranged in several lines across the length of the leaf.

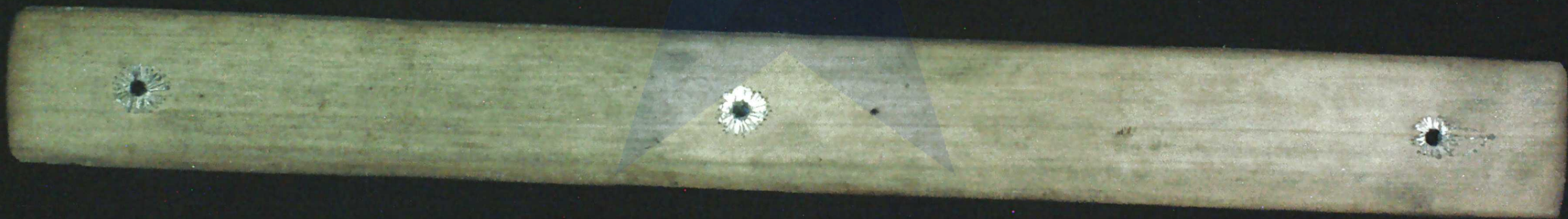
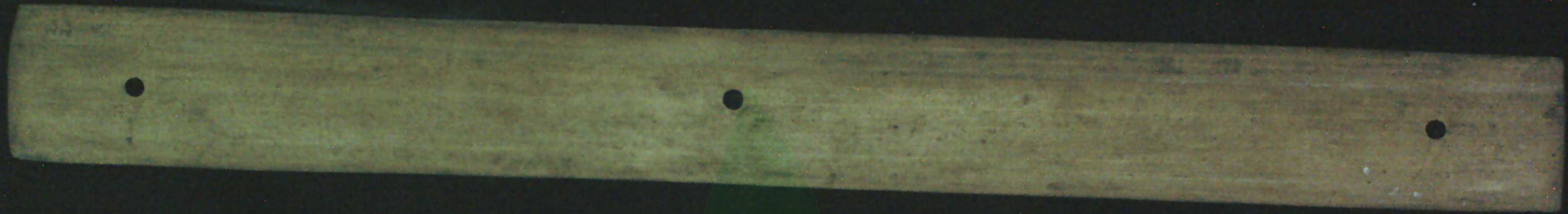
Handwritten text on a second palm leaf strip, continuing the script from the first strip. It contains several lines of text, with some characters appearing to be in a different script or dialect than the first strip.

Handwritten text on a palm leaf manuscript strip, likely in Burmese script. The text is arranged in several lines across the length of the leaf. There are four circular holes visible along the strip, which were traditionally used for threading a cord to bind multiple leaves together into a book format.

Handwritten text on a second palm leaf manuscript strip, also in Burmese script. This strip features a small circular mark on the left side, possibly a decorative element or a specific marker. Like the first strip, it contains multiple lines of text and has circular holes for binding.

Handwritten Khmer script on a palm leaf, consisting of approximately 10 lines of text.

Handwritten Khmer script on a palm leaf, consisting of approximately 10 lines of text.



Handwritten text on a palm leaf manuscript strip, consisting of approximately 12 lines of script.

•

•

•

၂

Handwritten text on a palm leaf manuscript strip, consisting of approximately 4 lines of script.

•

•

•

Handwritten Burmese script on a palm leaf, consisting of approximately 12 lines of text.



Handwritten Burmese script on a palm leaf, consisting of approximately 12 lines of text.



Handwritten Khmer script on a palm leaf, consisting of three lines of text.

36

Handwritten Khmer script on a palm leaf, consisting of three lines of text.

Handwritten text on a palm leaf strip, likely a historical record or document. The script is an ancient Southeast Asian script, possibly Khmer or Thai. The text is arranged in several lines across the length of the leaf.

Handwritten text on a second palm leaf strip, continuing the script from the first strip. It contains several lines of text, with some characters appearing to be in a different script or dialect than the first strip.

Handwritten text on a palm leaf manuscript strip, likely in Khmer script. The text is arranged in approximately three lines across the length of the leaf. Two circular holes are visible, used for binding multiple leaves together.

Handwritten text on a second palm leaf manuscript strip, continuing the script. Like the first strip, it features two circular holes for binding. The text is written in a similar cursive style.

Handwritten text on a palm leaf manuscript strip, likely in Burmese script. The text is arranged in approximately three lines across the length of the leaf. There are three circular holes visible along the strip, which were traditionally used for threading a cord to bind multiple leaves together into a book format.

Handwritten text on a second palm leaf manuscript strip, also in Burmese script. This strip contains approximately three lines of text. Like the first strip, it features three circular holes for binding. The script is consistent with the text on the upper strip, suggesting they are part of the same document.

Handwritten text on a palm leaf, likely a historical document or record. The script is in an ancient Southeast Asian script, possibly Khmer or Thai. The text is arranged in several lines across the length of the leaf.

Handwritten text on a second palm leaf, continuing the script from the first leaf. It contains several lines of text, with some characters appearing to be in a different script or dialect than the first leaf.

ស្តីបង្កើតការបញ្ជូនប្រាក់បញ្ញើ... ធនាគារជាតិកម្ពុជា... ក្រសួងសេដ្ឋកិច្ច និងហិរញ្ញវត្ថុ...
ក្រសួងសេដ្ឋកិច្ច និងហិរញ្ញវត្ថុ... ធនាគារជាតិកម្ពុជា... ក្រសួងសេដ្ឋកិច្ច និងហិរញ្ញវត្ថុ...
ធនាគារជាតិកម្ពុជា... ក្រសួងសេដ្ឋកិច្ច និងហិរញ្ញវត្ថុ... ក្រសួងសេដ្ឋកិច្ច និងហិរញ្ញវត្ថុ...
ក្រសួងសេដ្ឋកិច្ច និងហិរញ្ញវត្ថុ... ធនាគារជាតិកម្ពុជា... ក្រសួងសេដ្ឋកិច្ច និងហិរញ្ញវត្ថុ...

សម្រាប់ការបញ្ជូនប្រាក់បញ្ញើ... ធនាគារជាតិកម្ពុជា... ក្រសួងសេដ្ឋកិច្ច និងហិរញ្ញវត្ថុ...
ក្រសួងសេដ្ឋកិច្ច និងហិរញ្ញវត្ថុ... ធនាគារជាតិកម្ពុជា... ក្រសួងសេដ្ឋកិច្ច និងហិរញ្ញវត្ថុ...
ធនាគារជាតិកម្ពុជា... ក្រសួងសេដ្ឋកិច្ច និងហិរញ្ញវត្ថុ... ក្រសួងសេដ្ឋកិច្ច និងហិរញ្ញវត្ថុ...
ក្រសួងសេដ្ឋកិច្ច និងហិរញ្ញវត្ថុ... ធនាគារជាតិកម្ពុជា... ក្រសួងសេដ្ឋកិច្ច និងហិរញ្ញវត្ថុ...

Handwritten text in Khmer script on a palm leaf, consisting of approximately 10 lines of text.

Handwritten number '10' at the beginning of the second palm leaf.

Handwritten text in Khmer script on a palm leaf, consisting of approximately 10 lines of text.

Handwritten Burmese script on a palm leaf, consisting of approximately 12 lines of text.

၁၆၀

Handwritten Burmese script on a palm leaf, consisting of approximately 12 lines of text.

Handwritten text on a palm leaf manuscript strip, featuring three circular holes for binding. The script is in an ancient Southeast Asian language, likely Khmer or Thai, and is arranged in approximately three horizontal lines.

Handwritten text on a second palm leaf manuscript strip, also featuring three circular holes. The script is consistent with the first strip. A small mark or character is visible at the beginning of the first line of text.

Handwritten text on a palm leaf manuscript strip, likely in Burmese script. The text is arranged in approximately four lines across the length of the strip. Two circular holes are visible, used for binding multiple strips together.

Handwritten text on a second palm leaf manuscript strip, continuing the script. Like the first strip, it features two circular holes for binding. The text is written in a consistent cursive style.

Handwritten text on a palm leaf manuscript strip, likely in Burmese script. The text is arranged in approximately three lines across the length of the leaf. There are three circular holes visible along the strip, which were traditionally used for threading a cord to bind multiple leaves together into a book format.

၅၀

Handwritten text on a second palm leaf manuscript strip, continuing the Burmese script. The text is arranged in approximately three lines. Like the first strip, it features three circular holes for binding. The script is consistent with the text on the upper strip.

Handwritten text on a palm leaf, likely a historical document or record. The script is in an ancient Southeast Asian script, possibly Khmer or Thai. The text is arranged in several lines across the length of the leaf.

Handwritten text on a second palm leaf, continuing the script from the first leaf. The text is arranged in several lines across the length of the leaf.

Handwritten text on a palm leaf manuscript strip, likely in Burmese script. The text is arranged in approximately three lines across the length of the strip.

၅၆

Handwritten text on a palm leaf manuscript strip, likely in Burmese script. The text is arranged in approximately three lines across the length of the strip.

Handwritten text on a palm leaf manuscript strip, likely in Burmese script. The text is arranged in approximately three horizontal lines across the length of the leaf. The script is finely etched into the surface of the dried leaf.

၅၅

Handwritten text on a second palm leaf manuscript strip, continuing the script from the first strip. The text is arranged in approximately three horizontal lines. The leaf shows signs of age and wear, with some discoloration and small holes.

Handwritten text on a palm leaf, likely a historical document or record. The script is in an ancient Southeast Asian script, possibly Khmer or Thai. The text is arranged in several lines across the length of the leaf.

Handwritten text on a second palm leaf, continuing the script from the first leaf. It contains several lines of text, with some characters appearing to be in a different script or dialect than the first leaf.

Handwritten text on a palm leaf manuscript strip, likely in Burmese script. The text is arranged in several lines across the length of the leaf. Two circular holes are visible, used for binding multiple leaves together.

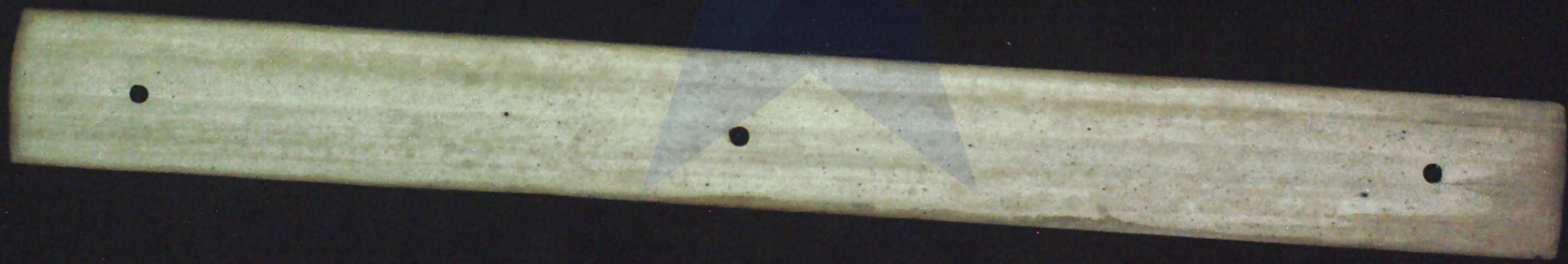
Handwritten text on a second palm leaf manuscript strip, continuing the script. Similar to the first strip, it features two circular holes for binding.

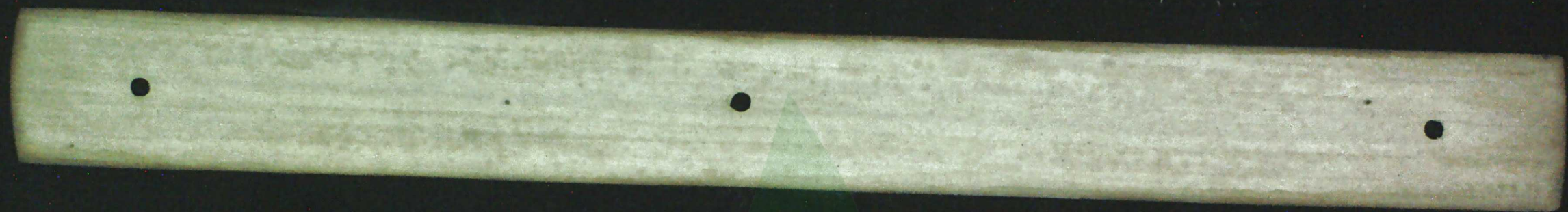
Handwritten text on a palm leaf manuscript strip, likely in Burmese script. The text is arranged in approximately three lines across the length of the leaf. There are three circular holes visible along the top edge, used for binding multiple leaves together.

၉၂
Handwritten text on a second palm leaf manuscript strip, continuing the Burmese script. It also features three circular holes along the top edge for binding. The text is written in a similar style to the first strip.









11 JUN 2021

NB 2764

PERPUSTAKAAN NASIONAL RI

Tanggal	: 11 JUNI 2021
Item ID	: 00003068650
No. Induk	: 202101203015868
BIB-ID	: 0010-0621003060
Beli/	: AHMAD S/DNK

